



8 1/2 x 5 1/2
Book Template

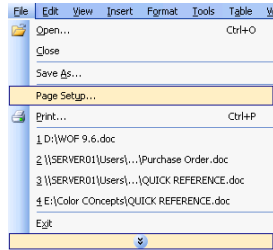
www.3CrossPublishing.com
1-877-626-7596

9757 Widmer
Lenexa, KS 66215

Document Set Up For Microsoft Word

STEP 1 File Menu

Select Page Setup



STEP 2. Margin Tab

Set Margins

Top Margin to 1"

Inside Margin to .75"

Gutter to .5"

Bottom to 1"

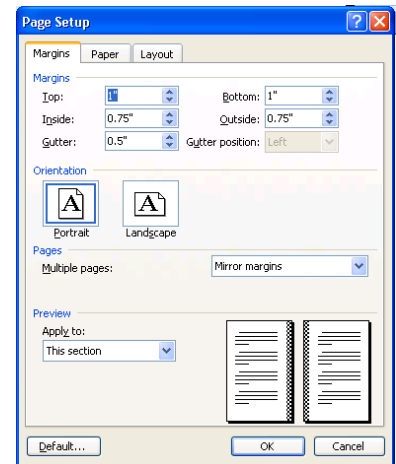
Outside Margin to .75"

Orientation

Portrait

Pages

Mirror Margins



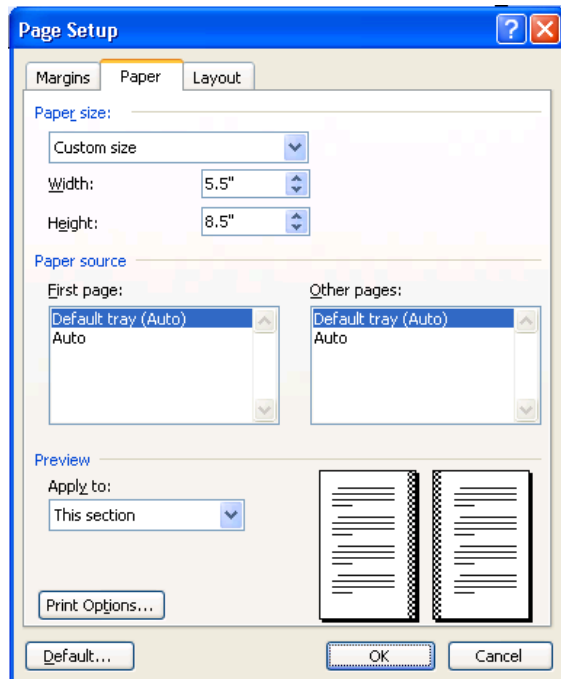
STEP 3 Paper Tab

Paper Size

Custom Size

Width: 5.5"

Height: 8.5"



STEP 4 Layout

Section

Section Start: New Page

Headers and Footers

Check Different odd and even

Check Different first page

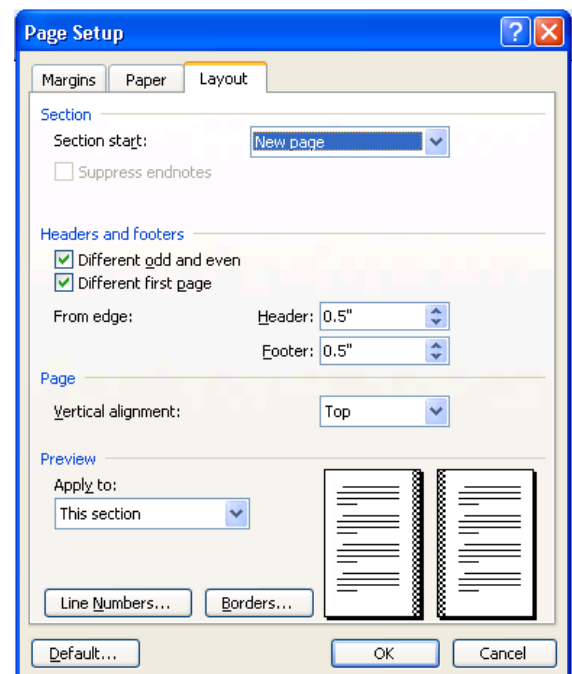
From Edge

Header 0.5"

Footer 0.5"

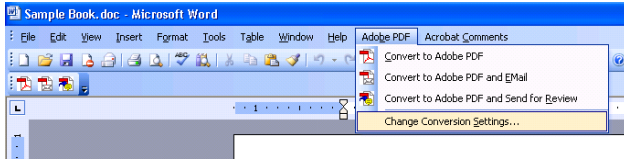
Page

Vertical Alignment: Top



Saving PDF Settings

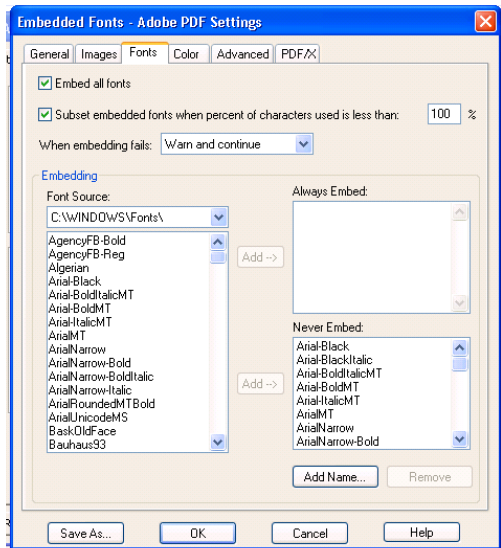
Step 1 Adobe PDF Menu – *Change Conversion Settings*



Step 2 Adobe PDFMaker Select “Advanced Settings”



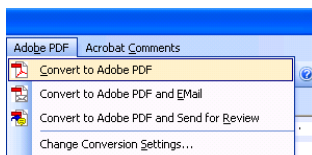
Step 3 Select Fonts Tab Check the “embed all fonts box”



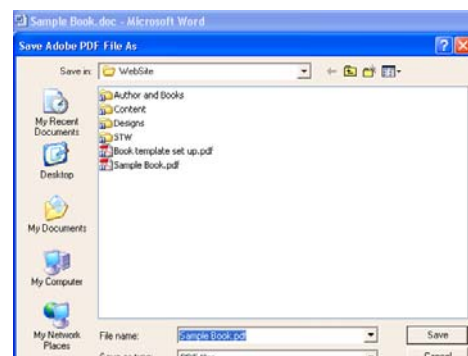
Typically, text files do not need any special settings except for embedding fonts. If your book has special images please contact a 3Cross Publishing representative to assist you.

Saving Word File To PDF

Step 1 Adobe PDF *Convert to Adobe PDF*



Step 2 Save PDF *Type file name and sav*



3Cross Publishing Design and Layout Services

3Cross Publishing has a network of professional designers, editors, and layout specialists to meet all your needs. However, our authors are free to do all of these tasks themselves.

If you would like to perform these tasks yourself, below are some helpful hints to assist you. **REMEMBER, 3CROSS PUBLISHING REQUESTS PDF FILES TO PRINT FROM.** 3Cross Publishing also requests the original source file (i.e. MS WORD) in order to review setup and original document layout.

IF YOU HAVE ANY QUESTIONS, PLEASE CALL A 3CROSS PUBLISHING REPRESENTATIVE AT 1-877-626-7596.

TEXT TIPS:

Even though the previous guidelines are for Microsoft Word, the same settings could be used for almost any program. Below are some guidelines to remember when laying out a book.

- The inside margin should be at least the same size as the outside margin to allow for the binding edge.
- The finished book will actually be slightly smaller than 8 1/2 x 5 1/2. Allow for an 1/8" to be trimmed off each side during the bindery process.
- The best way to ensure document integrity through the publishing process is to submit Adobe Acrobat PDF files. Contact a 3Cross Publishing representative if you do not understand this process.
- Select a font that is pleasing to the eye. Some samples are as follows:
ARIAL
Bookman Old Style
Garamond
Times New Roman

COVER TIPS:

- Use CMYK color, not RGB on all elements within cover.
- If a bleed edge is desired, then there must be a bleed of at least 1/8" on all sides where the bleed is wanted.
- Remember, to leave enough room on the spine to insert the text (410 Pages per inch / 205 sheets per inch).
- The best way to ensure document integrity through the publishing process is to submit Adobe Acrobat PDF files. Contact a 3Cross Publishing representative if you do not understand this process.